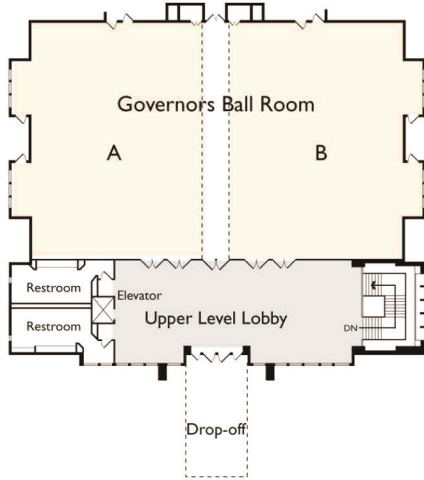


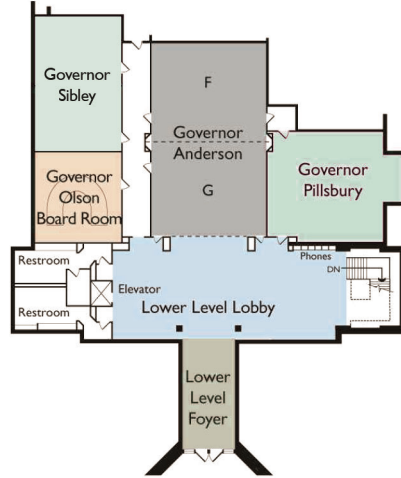


**MEETING FACILITIES DIAGRAMS**

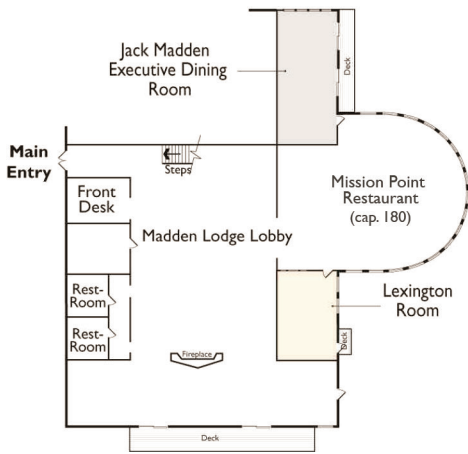
Drawings not to scale, see page 2 for actual dimensions.



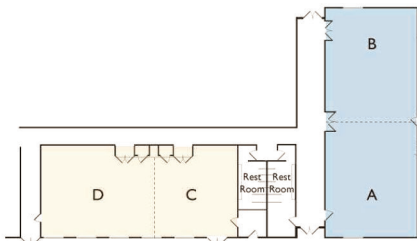
**Town Hall Upper Level**



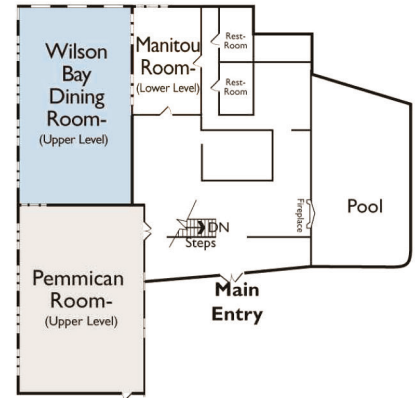
**Town Hall Lower Level**



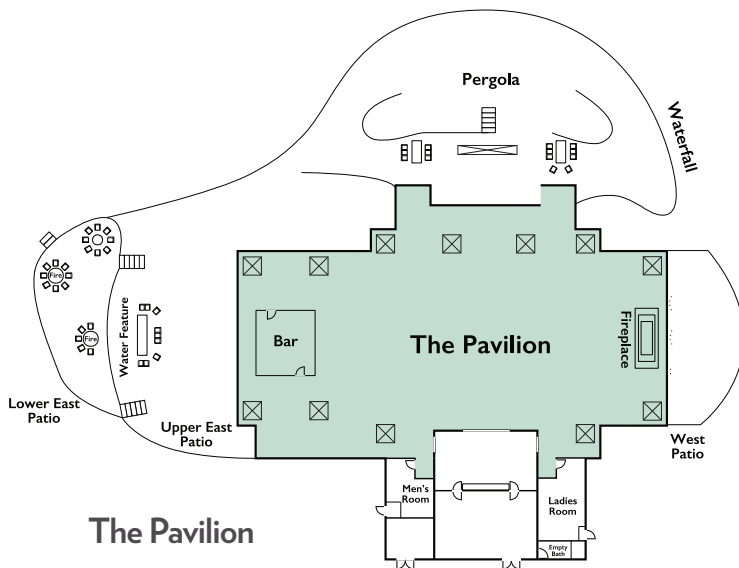
**Madden Lodge Meeting Rooms**



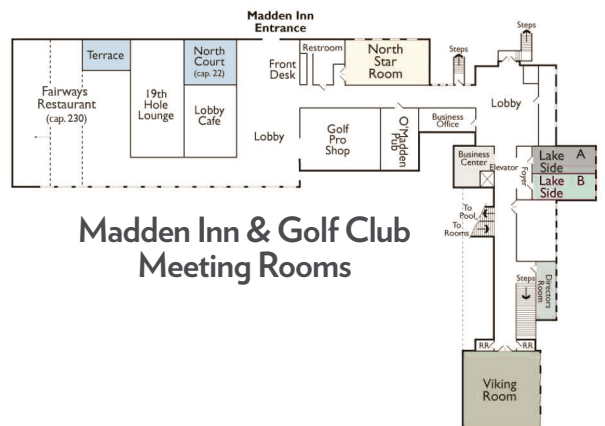
**Golf Villa Meeting Rooms**



**Wilson Bay Meeting Rooms**



**The Pavilion**



**Madden Inn & Golf Club Meeting Rooms**

## MEETING FACILITIES DIAGRAMS

### Town Hall Conference Center\*

	Dimensions	Square Footage	Ceiling Height	Theater	Classroom	U-Shape	Crescent/Pods
Governor's Ballroom (A&B)	108'x69'	7,452	14'	700	410	—	376
Ballroom A or B	49'x69'	3,381	14'	300	200	—	126
Ballroom A or B +	59'x69'	4,071	14'	335	216	—	192
Anderson (F&G)	35'x62'	2,170	10'-6"	210	150	—	128
Anderson F	35'x31'	1,085	10'-6"	90	60	30	56
Anderson G	35'x31'	1,085	10'-6"	90	60	30	64
Pillsbury	33'x33'	1,089	10'-6"	90	60	34	56
Sibley	35'x27'	945	10'-6"	90	56	26	64
Olson Board Room	28'x27'	756	10'-6"	—	—	18	—
Exhibits	Dimension	Square Footage	Ceiling Height		8' Table	Booth	
Upper Lobby	70'x 30'	2,100	14'	—	15	8	—
Lower Lobby w/Foyer	70'x30', 16'x35'	2,660	10'-6"	—	18	10	—
Lower Lobby w/Anderson	70'x30', 35'x62'	4,830	10'-6"	—	42	26	—
Governor's Ballroom (A&B)	108'x69'	7,452	14'	—	52	42	—

### Golf Villas\*

	Dimensions	Square Footage	Ceiling Height	Theater	Classroom	U-Shape	Pods
Golf Villa A/B	78'x37'	2,886	13'-6"	300	174	—	174
Golf Villa A	35'x37'	1,295	13'-6"	100	75	33	72
Golf Villa B	37'x43'	1,591	13'-6"	135	84	35	90
Golf Villa C/D	29'x80'	2,320	13'-6"	240	150	—	120
Golf Villa C	29'x39'	1,131	13'-6"	95	70	24	60
Golf Villa D	29'x40'	1,160	13'-6"	95	70	24	60

### Madden Inn & Golf Club\*

Specific Room	Dimensions	Square Footage	Ceiling Height	Theater	Classroom	U-Shape	Crescent
Viking	47'x57'	2,679	11'	245	150	44	70
Northstar	26'x56'	1,456	9'9"	130	80	32	56
Board Room							
Lakeside A	14'x39'	546	10'	40	25	—	20
Lakeside B	14'x39'	546	10'	40	25	—	20
Director's Room	12'x26'	312	9'-4"	—	—	—	12

### Private Dining\*\*

	Dimensions	Square Footage	Ceiling Height	Banquet
Governor's Ballroom (A&B)	108'x69'	7,452	14'	500
Ballroom A or B	49'x69'	3,381	14'	180
Ballroom A or B +	59'x69'	4,071	14'	230
Executive Room	32'x14'	448	10'	30
Lexington Room	22'x14'	308	9'-6"	12
Fairways Terrace	32'x13'	416	9'	40
North Court	29'x14'	406	9'	25
Wilson Bay Dining Room	60'x60'	2,704	8.5'-14'	230
Pemmican	37'x35'	1,295	11'-6"	100

### Outdoor Venues\*\*

	Dimensions	Square Footage	Ceiling Height	Banquet
Wilson Bay Deck	65'x27'	1,755	9'	70
Wilson Bay Beach	127'x50'	6,350	N/A	180
Pavilion	128'x52'	6,656	13.5'-18.5'	300
Pavilion w/Patios	—	—	—	590
Pavilion w/Patios & Tent	—	—	—	780+

\*Note: Capacities may be adjusted when A/V or special set ups occur. \*\*A/V may be limited.