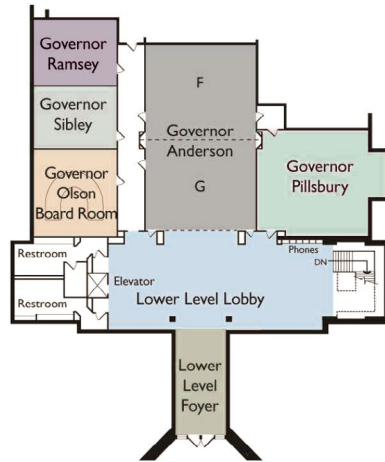
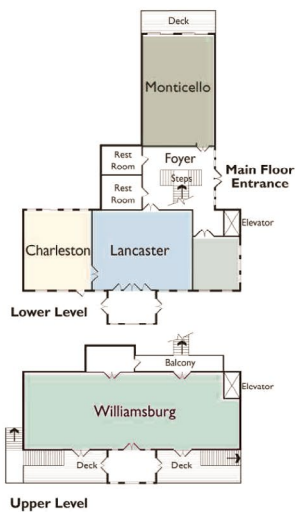


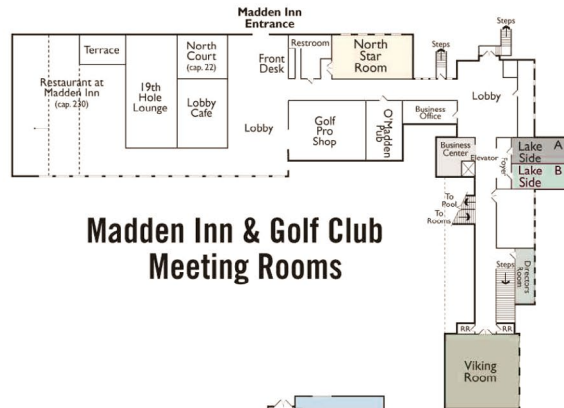
**Town Hall Upper Level**



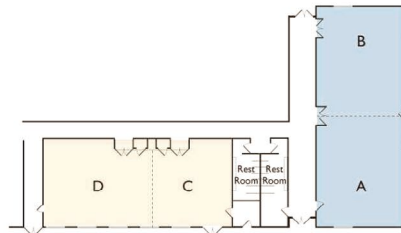
**Town Hall Lower Level**



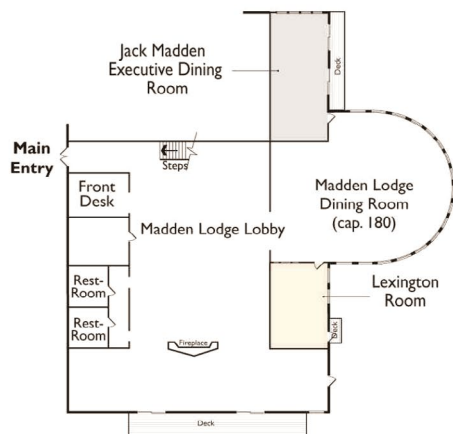
**Madden Lodge Colonial Hall**



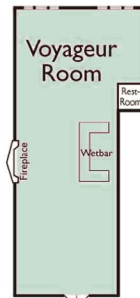
**Madden Inn & Golf Club Meeting Rooms**



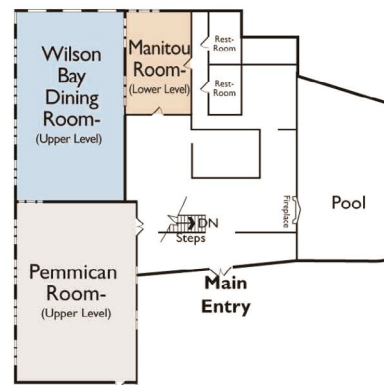
**Golf Villa Meeting Rooms**



**Madden Lodge Meeting Rooms**



**Voyageur**



**Wilson Bay Meeting Rooms**



# Meeting Facilities

## Town Hall Conference Center

Specific Room	Dimensions	Square Footage	Ceiling Height	Theater	Classroom	U-Shape	Banquet
Governor's Ball Room	108'x 69'	7,452	14' to 17'	700	410	-	600
Ball Room A	49'x69'	3,381	14' to 17'	300	200	-	250
Ball Room B	49'x69'	3,381	14' to 17'	300	200	-	250
Anderson (F&G)	35'x62'	2,170	10'-6"	210	150	-	-
Anderson G	35'x31'	1,085	10'-6"	90	60	30	-
Anderson F	35'x31'	1,085	10'-6"	90	60	30	-
Pillsbury	33'x33'	1,089	10'-6"	90	60	34	-
Ramsey	17'x27'	459	10'-6"	45	30	20	-
Sibley	17'x27'	459	10'-6"	45	30	20	-
Olson Board Room	28'x27'	756	10'-6"	-	-	18	-
Upper Level Lobby	70'x30'	2,100	14'-17'	-	-	-	-
Lower Level Lobby	70'x30'	2,100	10'-6"	-	-	-	-
Lower Level Foyer	16'x 35'	560	10'-6"	-	-	-	-

## Wilson Bay

Specific Room	Dimensions	Square Footage	Ceiling Height	Theater	Classroom	U-Shape	Banquet
Pemmican	37'x 35'	1,295	11'-6"	120	100	36	100
Manitou	15'x28'	420	7'-8"	-	16	-	-
Voyageur	22'x52'	1,144	8'	(hospitality room only)		-	-
Wilson Bay Dining Room	60'x60'	2,704	9'-8'5"	-	-	-	230

## Madden Inn & Golf Club

Specific Room	Dimensions	Square Footage	Ceiling Height	Theater	Classroom	U-Shape	Banquet
Viking	47'x57'	2,679	12'-6"	245	150	44	-
Northstar	26'x56'	1,456	9'-9"	130	80	32	80
Lakeside A	14'x39'	546	10'	40	25	-	-
Lakeside B	14'x39'	546	10'	40	25	-	-
Director's Room	12'x26'	312	9'-4"	-	-	12	-
Golf Villa A/B	78'x37'	2,886	13'-6"	300	174	50	-
Golf Villa A	35'x37'	1,295	13'-6"	100	75	33	-
Golf Villa B	37'x43'	1,591	13'-6"	135	84	35	-
Golf Villa C/D	29'x80"	2,320	13'-6"	240	150	60	-
Golf Villa C	29'x39'	1,131	13'-6"	95	70	24	-
Golf Villa D	29'x40'	1,160	13'6"	95	70	24	-

## Madden Lodge

Specific Room	Dimensions	Square Footage	Ceiling Height	Theater	Classroom	U-Shape	Banquet
Williamsburg	31'x77'	2,387	10' to 14'	200	160	40	-
Lancaster	30'x37'	1,110	9'6"	80	50	32	-
Charleston	30'x21'	630	9'6"	50	32	24	-
Monticello	38'x23'	874	10'2"	60	32	24	-
Executive	32'x14'	448	10'	24	24	20	24
Lexington	22'x14'	308	9'-6"	-	-	-	12

Note: Capacities may be adjusted when A/V or special set ups occur